

# MONTHLY MEMBERSHIP PROGRESS REPORT

LOCATION WISCONSIN

District 27 D2

Results as of: 3/31/2021

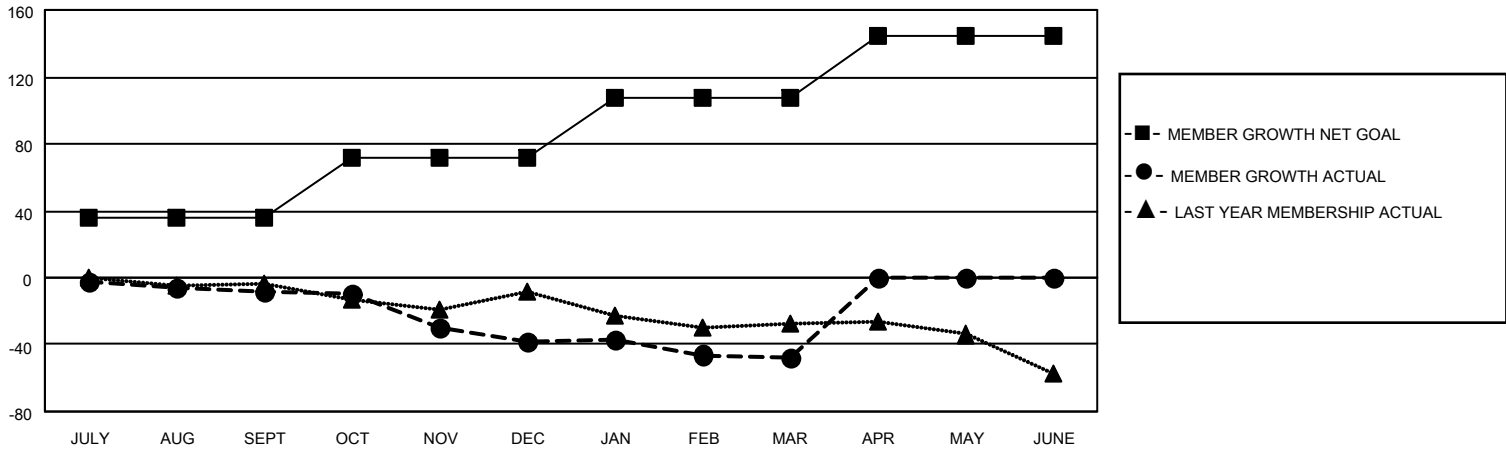
Clubs			
RESULTS FOR 2020-2021			
QUARTER	NEW CLUB GOAL	NEW CLUBS	DROPPED CLUBS
JULY/AUG/SEPT	0	0	0
OCT/NOV/DEC	0	0	0
JAN/FEB/MAR	1	0	0
APR/MAY/JUNE	0	0	0

Members			
RESULTS FOR 2020-2021			
QUARTER	MEMBER GROWTH NET GOAL	MEMBER GROWTH ACTUAL	DROPPED MEMBERS ACTUAL (including transfers)
JULY/AUG/SEPT	36	35	42
OCT/NOV/DEC	36	18	46
JAN/FEB/MAR	36	23	31
APR/MAY/JUNE	36	0	0

**GOALS AND ACTUAL NEW CLUBS CUMULATIVE**



**GOALS AND ACTUAL MEMBERS CUMULATIVE**



DROPPED CLUBS: 0	27 CLUBS OF 48 ADDED 1 OR MORE NEW MEMBERS	<u>GENDER DISTRIBUTION</u>
<u>DROPPED MEMBERS</u>	<a href="#">CLICK HERE FOR CUMULATIVE MEMBERSHIP DATA</a>	MALE 1,112 (72.97%)
DECEASED 14		FEMALE 412 (27.03%)
CLUB CANCELLED 0		TOTAL FAMILY UNIT MEMBERS 341
OTHER 105		FAMILY MEMBERS PAYING HALF DUES 175
<b>TOTAL 119</b>		